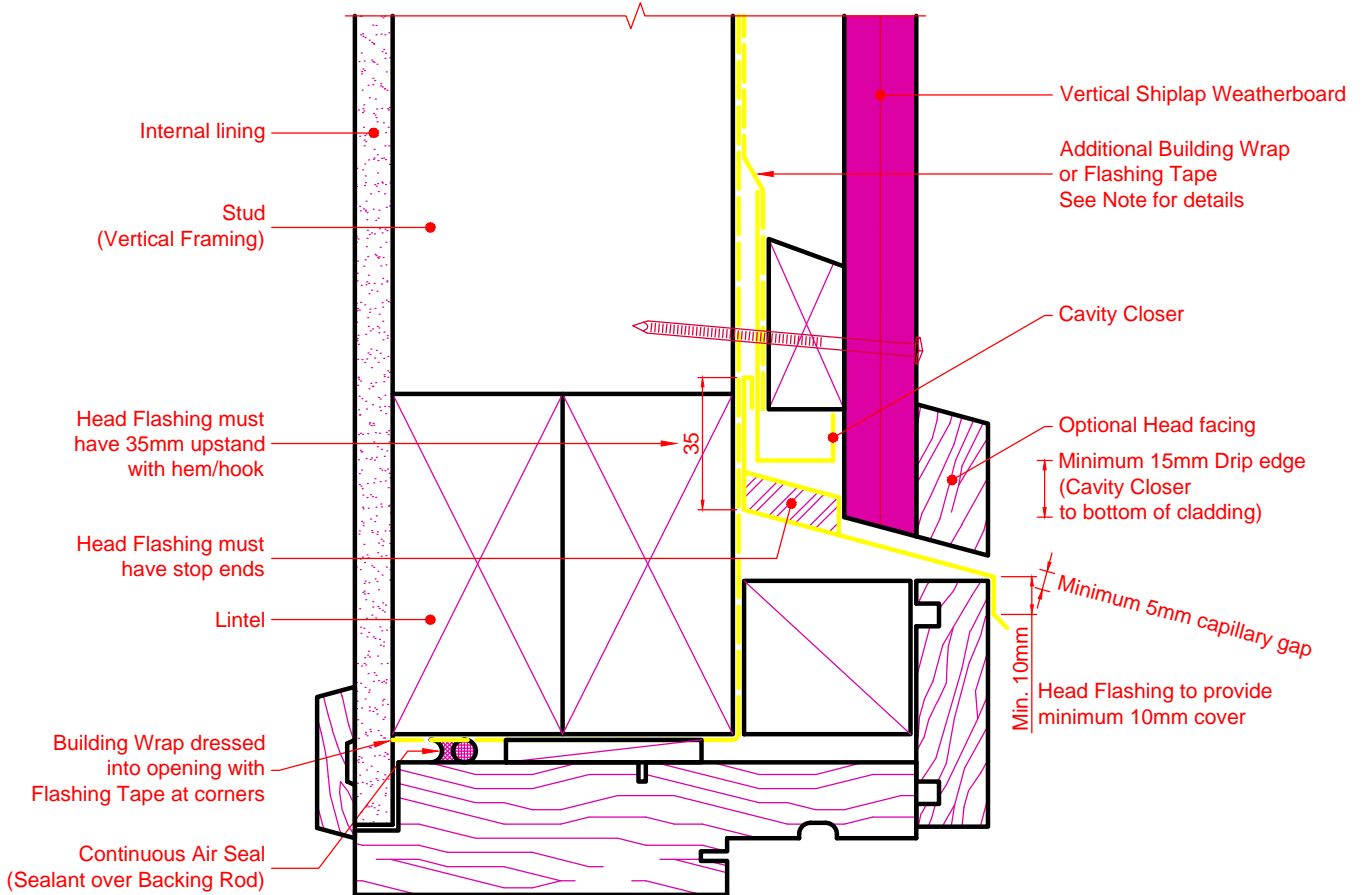


# Timber Joinery Details Head



Note: Additional Building Wrap to extend up wall to nearest lap above and extend down as far as possible into Cavity Closer.

Alternatively Flashing Tape to extend up wall a minimum of 50mm above Cavity Closer and extend down as far as possible into Cavity Closer.

*Note: Refer to the Vertical Shiplap Cavity System Installation Manual for full details*